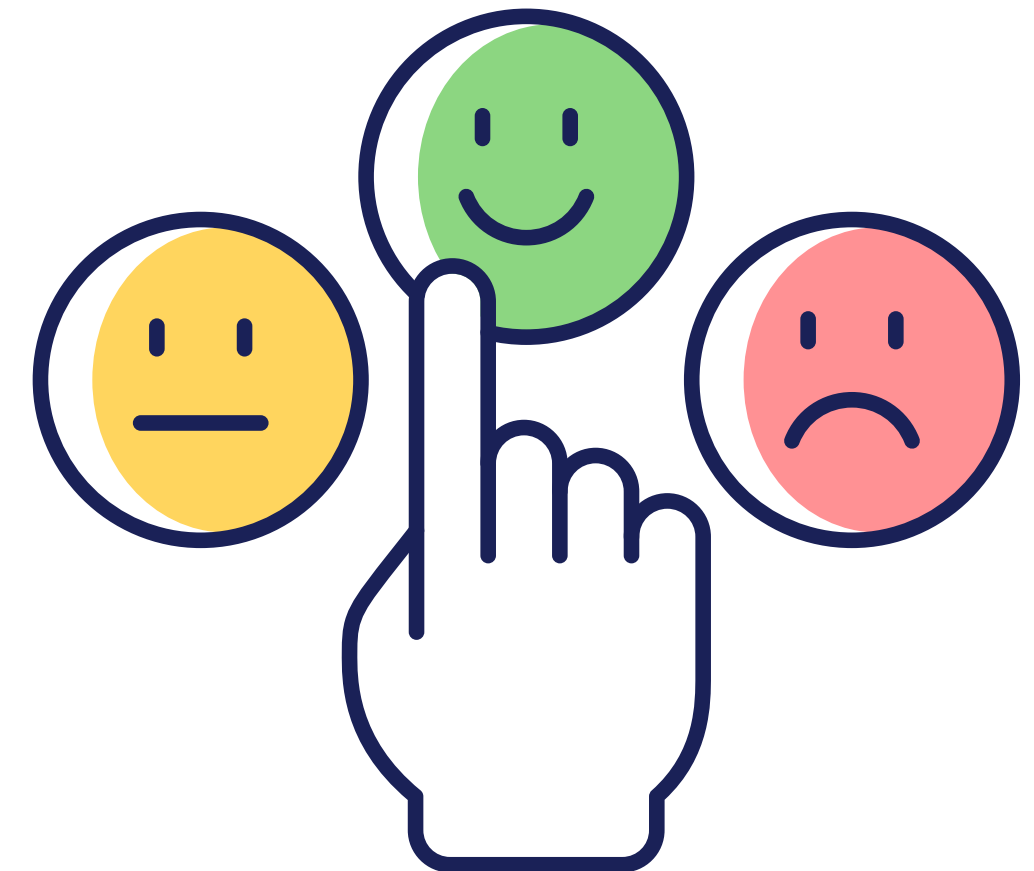


Bishopswood School's Philosophy on Behaviour Management



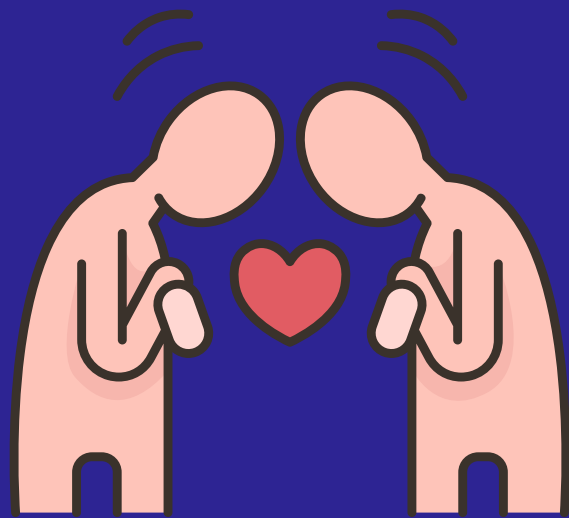
At Bishopswood School, our behaviour management approach centers on respect, inclusivity, and support to help every child grow into a confident, engaged learner.



Core Beliefs and Goals



Respectful and Safe Environment:
We believe school should be a safe, calm space where each child learns self-respect and respect for others.



Positive Development:
Positive behaviour is encouraged by fostering self-worth, confidence, and empathy. We teach students to understand the impact of their actions on themselves and others



Supportive Growth:
By building confidence in their abilities, we encourage children to take responsibility for their actions and practice self-management.



Behaviour as Communication





Understanding Behaviour:
We view challenging behaviour as a form of communication. Our role is to understand the reasons behind behaviours and support children in expressing themselves in positive ways.

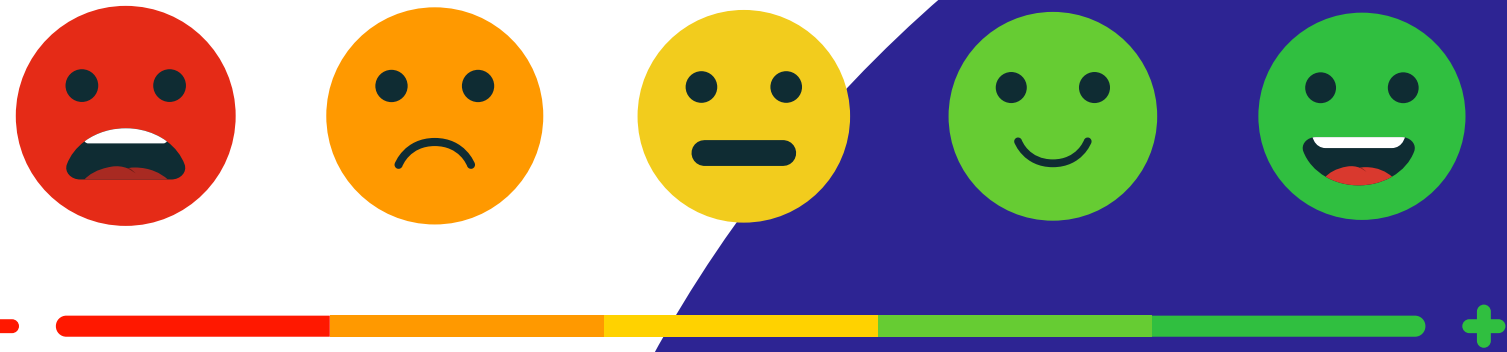
Individualised Support:
Every child's behaviour plan is personalised, reflecting their unique needs and learning style. Staff are trained to adapt strategies to support each child's development.

PLAN A

PLAN B

Emotional and Behavioural Support





ZONES OF REGULATION

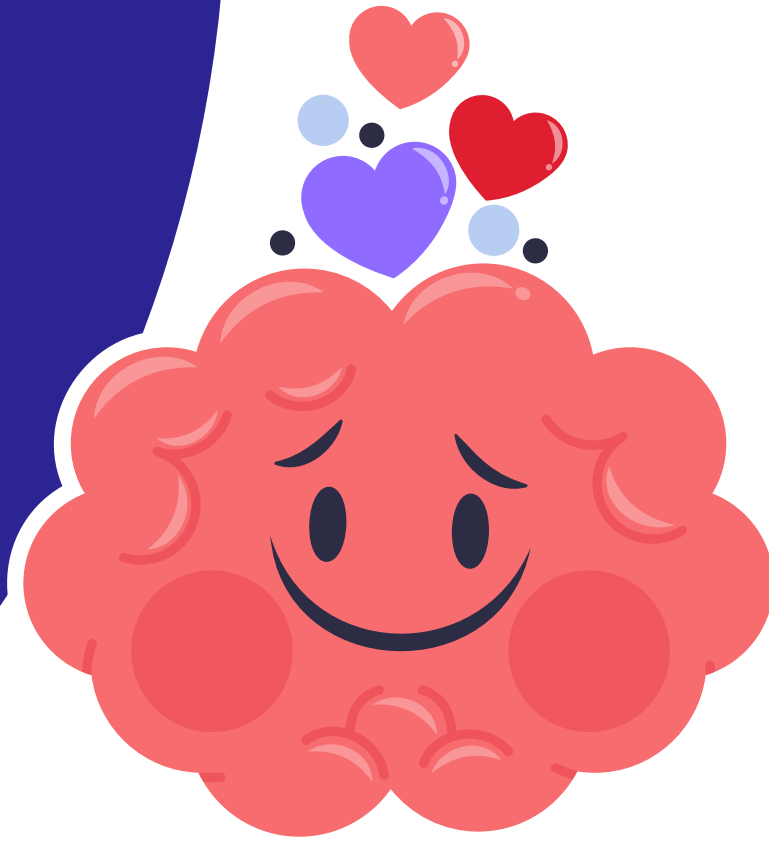
We use this tool to help children recognise and manage their emotions, empowering them with self-regulation strategies.





SENSORY SUPPORTS AND SAFE SPACES

Our sensory room and tools like OT resources are available to help students manage emotions constructively and return to a state conducive to learning.



Collaboration and Consistency



01

Working Together

We partner with parents to ensure a consistent, supportive approach, welcoming their involvement at each stage of behaviour planning and adjustment.

02

Regular Review and Monitoring

Behaviour plans are regularly reviewed, updated, and supported by a strong network of staff and external professionals.



Our approach at Bishopswood School aims to create a compassionate environment where every child feels understood, valued, and empowered to thrive.